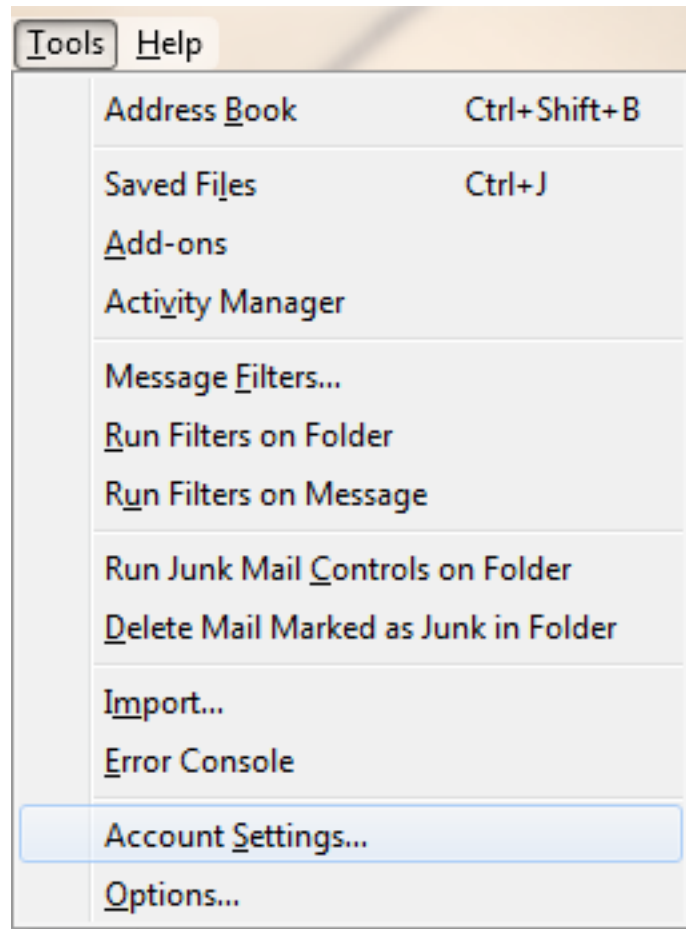


Email Setup For Thunderbird 8

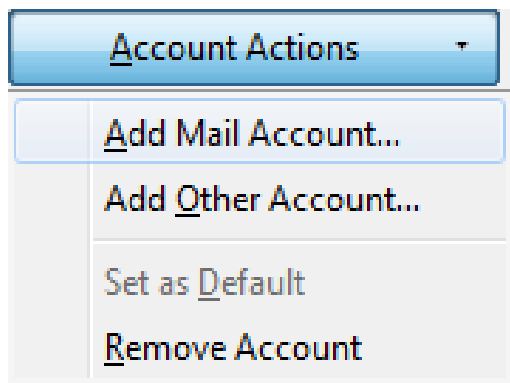
Skip to step 3 if this is your first time using Thunderbird

Step 1) Open up Thunderbird and select 'Tools' from the menu at the top left.

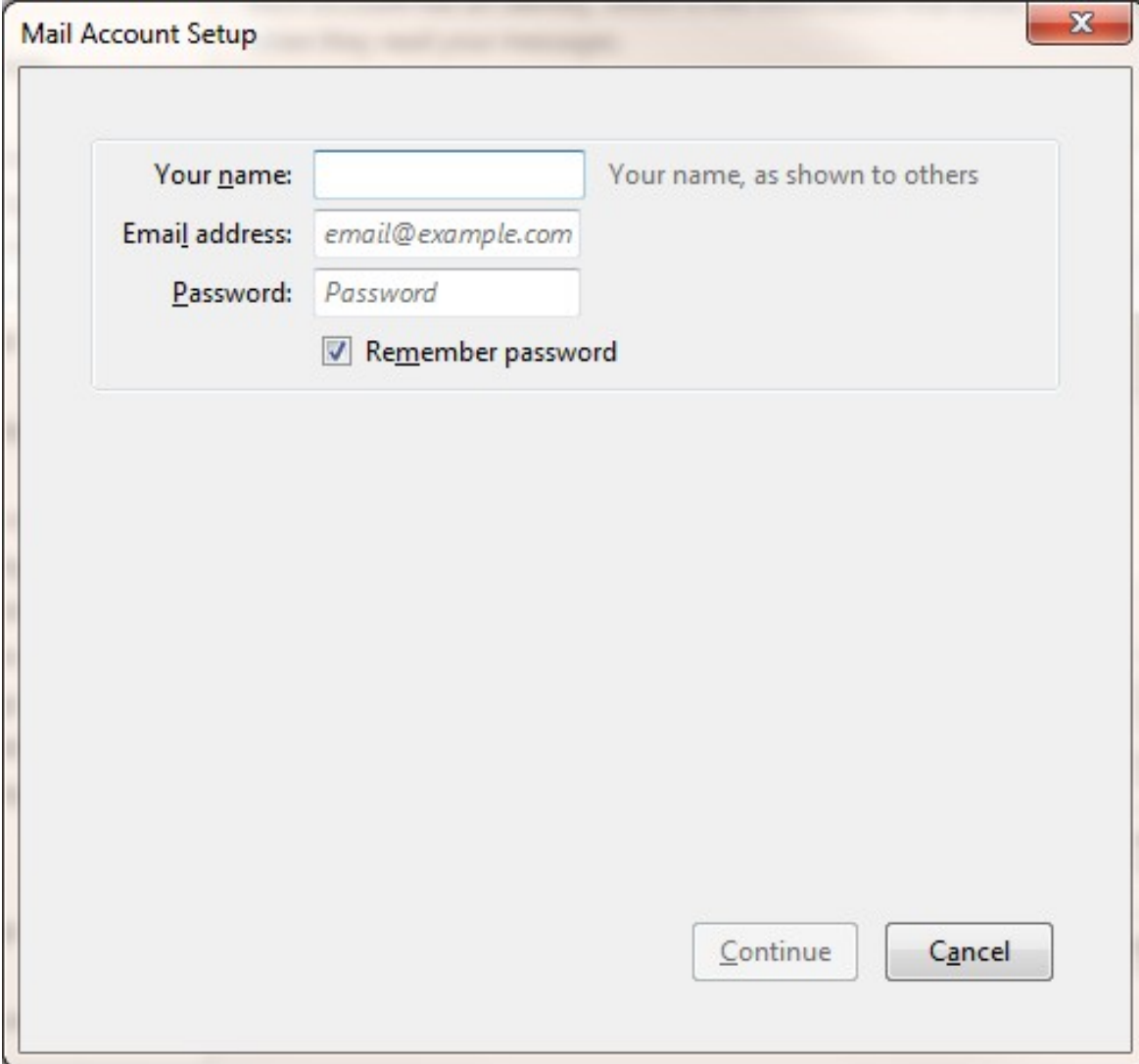


Step 2) Select Account Settings.

In the bottom left of the 'Account Settings' window, select 'Account Actions' and then 'Add Mail Account'



Step 3) Now you will see the following screen. If it's your first time using Thunderbird, this is the first screen you see. Fill out your name, email address, and password. Make sure 'Remember password' is checked. Don't click continue yet.

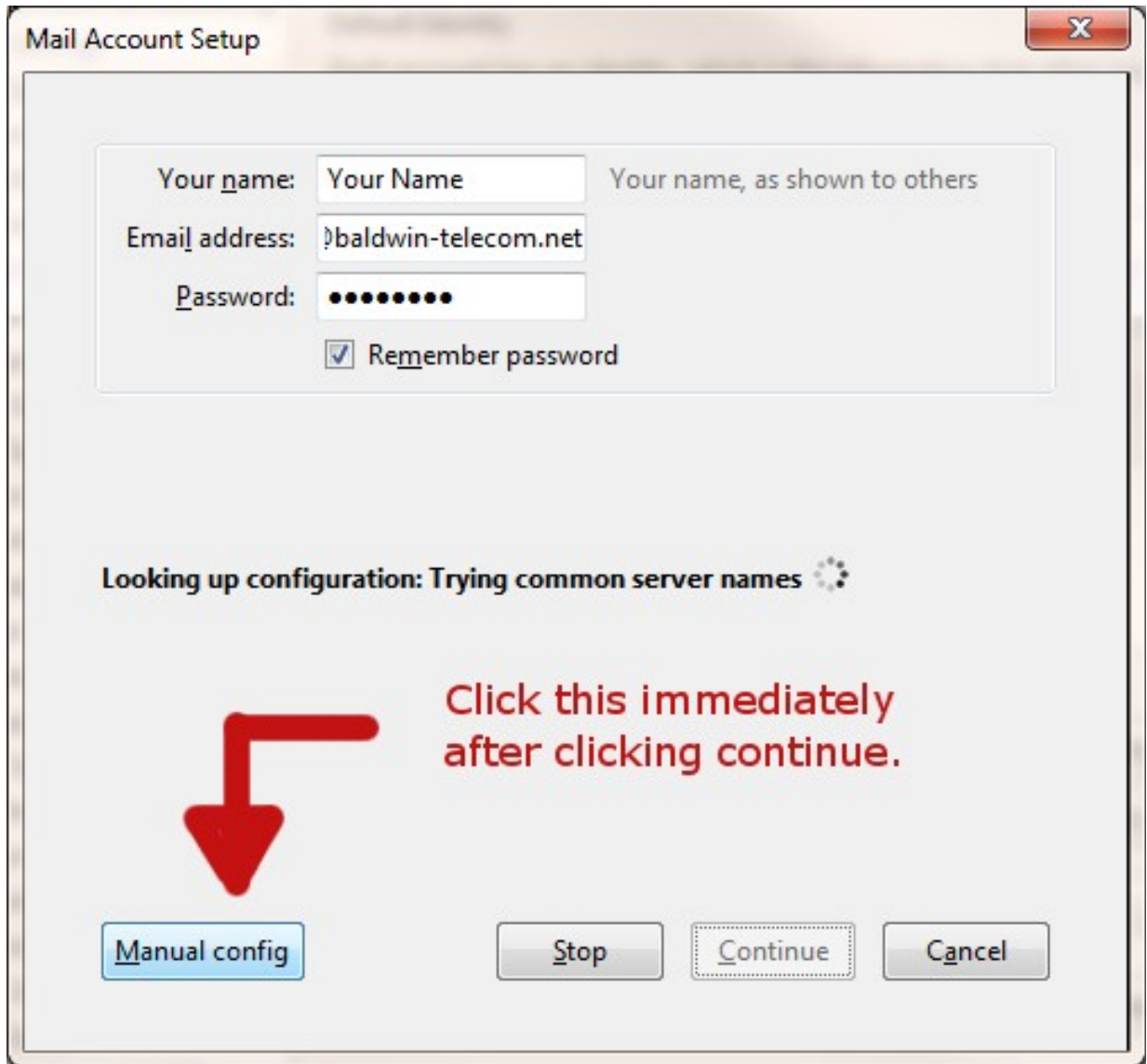


The image shows a 'Mail Account Setup' dialog box with a title bar and a close button (X) in the top right corner. The dialog contains three input fields: 'Your name:' (empty), 'Email address:' (containing 'email@example.com'), and 'Password:' (containing 'Password'). Below the password field is a checked checkbox labeled 'Remember password'. At the bottom right of the dialog are two buttons: 'Continue' and 'Cancel'.

Your name:	<input type="text"/>	Your name, as shown to others
Email address:	<input type="text" value="email@example.com"/>	
Password:	<input type="password" value="Password"/>	
	<input checked="" type="checkbox"/> Remember password	

This is the first thing you see if you haven't used Thunderbird before.

Step 4) In the next image you will see a new button has appeared that says 'Manual config'. This shows up right after you click continue. Make sure to click this button as soon as it is available. This will prevent Thunderbird from attempting to configure incorrect settings.



Step 5) Now you will see all of the boxes needed to configure your connection. Your selections should match the following diagram with the exception of the name, email, and password fields. Those should match whatever information you received when you got your email.

Mail Account Setup

Your name: Your Name Your name, as shown to others

Email address: baldwin-telecom.net

Password: ●●●●●●

Remember password

	Server hostname	Port	SSL	Authentication
Incoming: POP3	mail.airstreamcomm.net	110	None	Normal password
Outgoing: SMTP	mail.airstreamcomm.net	587	None	Normal password

Username: yourusername

Advanced config Re-test Create Account Cancel

Step 6) Finally click 'Create Account'. You will see the following warning message. Simply check 'I understand the risks.' and then click 'Create Account'. Now you should be all done.

Mail Account Setup

Warning!

Incoming settings: mail.airstreamcomm.net does not use encryption.
▶ Technical Details

Outgoing settings: mail.airstreamcomm.net does not use encryption.
▶ Technical Details

Thunderbird can allow you to get to your mail using the provided configurations. However, you should contact your administrator or email provider regarding these improper connections. See the Thunderbird FAQ for more information.

I understand the risks.

Change Settings Create Account